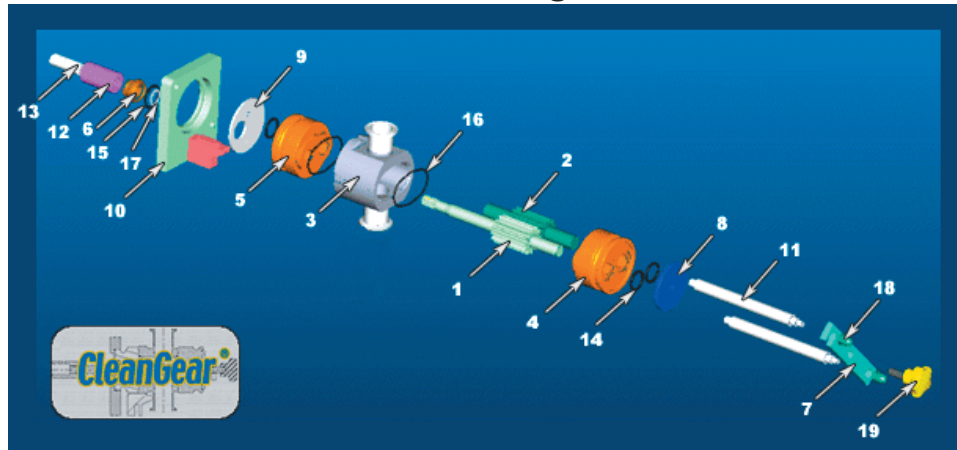


CleanGear® Sanitary Stainless Steel Gear Pumps Parts Ordering Guide



ITEM	PART NO.	DESCRIPTION	QTY
1	PGP00007	DRIVE GEAR - 6.0 GPM	1
1A	PGP00025	DRIVE GEAR - 3.0 GPM	1
2	PGP00009	IDLER GEAR - 6.0 GPM	1
2A	PGP00026	IDLER GEAR - 3.0 GPM	1
3	PGP00011	PUMP BODY WELDMENT	1
4	PGP00012	IDLER-END BEARING (Specify Material)	1
5	PGP00013	DRIVE-END BEARING - 6.0 GPM (Specify Material)	1
5A	PGP00029	DRIVE-END BEARING - 3.0 GPM (Specify Material)	
6	PGP00014	SEAL GLAND	1
7	PGP00015	DRAW CLAMP	1
8	PGP00016	ENDCAP	1
9	PGP00017	RETAINER PLATE	1
10	PGP00021	PUMP MOUNTING BRACKET ASSEMBLY	1
11	PGP00022	DRAW ROD	2
12	PGP00023	SPLINE COUPLING	1
13	PGP00024	STUB SHAFT-BASED ON CPLNG	1
14	BEARING SEAL	O-RING 2-215 VITON V680-70	3
15	GLAND SEAL	O- RING 2-217 VITON V680-70	1
16	PUMP SEAL	O-RING 2-147 VITON V680-70	2
17	SHAFT SEAL	O-RING 2-210 VITON V680-70	1
18	70962	3/8-16 SS CAP NUT (ACORN NUT)	2
19	8TKR4SD	DRAW KNOB AND SCREW	1